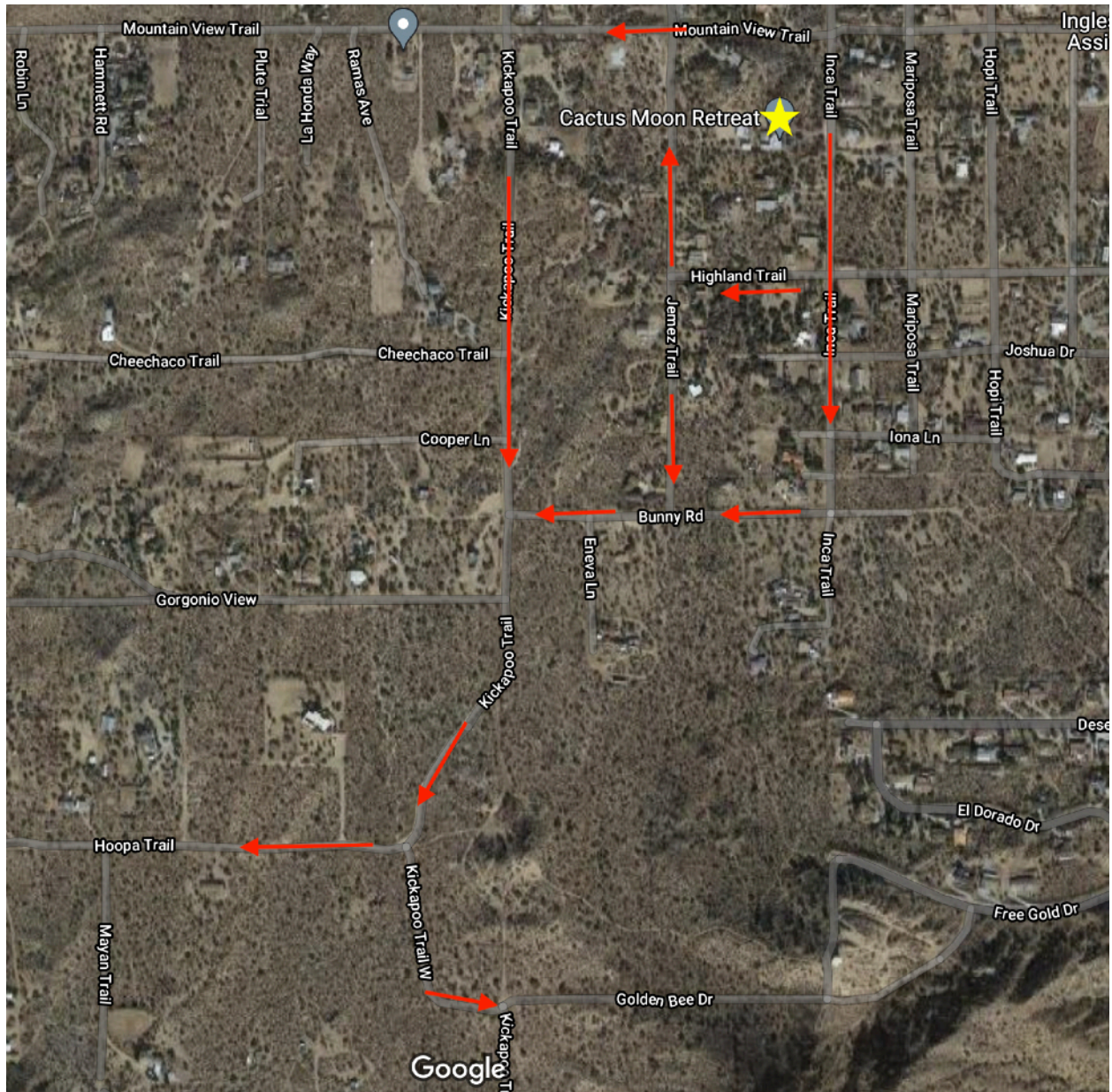


YUCCA VALLEY
20 16
CACTUS MOON
RETREAT

Trail Map



From the front of the house, take the driveway to Inca, go left (towards Mountain View Trl) or right (towards Bunny Rd) to Jemez or Kickapoo Trls. You can also walk straight back through the property past the poolhouse to Jemez Trl.

For longer walks, go left from Bunny Trl onto Kickapoo Trl and continuing following Kickapoo or veer right on Hoopa Trl and the roads that connect off of Hoopa. These trails are all dirt roads; however, you will catch a glimpse of hi-desert living!